

По вопросам продаж и поддержки обращайтесь:

**Алматы** (7273)495-231  
**Ангарск** (3955)60-70-56  
**Архангельск** (8182)63-90-72  
**Астрахань** (8512)99-46-04  
**Барнаул** (3852)73-04-60  
**Белгород** (4722)40-23-64  
**Благовещенск** (4162)22-76-07  
**Брянск** (4832)59-03-52  
**Владивосток** (423)249-28-31  
**Владикавказ** (8672)28-90-48  
**Владимир** (4922)49-43-18  
**Волгоград** (844)278-03-48  
**Вологда** (8172)26-41-59  
**Воронеж** (473)204-51-73  
**Екатеринбург** (343)384-55-89  
**Иваново** (4932)77-34-06  
**Ижевск** (3412)26-03-58  
**Иркутск** (395)279-98-46  
**Казань** (843)206-01-48

**Калининград** (4012)72-03-81  
**Калуга** (4842)92-23-67  
**Кемерово** (3842)65-04-62  
**Киров** (8332)68-02-04  
**Коломна** (4966)23-41-49  
**Кострома** (4942)77-07-48  
**Краснодар** (861)203-40-90  
**Красноярск** (391)204-63-61  
**Курган** (3522)50-90-47  
**Курск** (4712)77-13-04  
**Липецк** (4742)52-20-81  
**Магнитогорск** (3519)55-03-13  
**Москва** (495)268-04-70  
**Мурманск** (8152)59-64-93  
**Набережные Челны** (8552)20-53-41  
**Нижний Новгород** (831)429-08-12  
**Новокузнецк** (3843)20-46-81  
**Новосибирск** (383)227-86-73  
**Ноябрьск**(3496)41-32-12

**Омск** (3812)21-46-40  
**Орел** (4862)44-53-42  
**Оренбург** (3532)37-68-04  
**Пенза** (8412)22-31-16  
**Пермь** (342)205-81-47  
**Петрозаводск** (8142)55-98-37  
**Псков** (8112)59-10-37  
**Ростов-на-Дону** (863)308-18-15  
**Рязань** (4912)46-61-64  
**Самара** (846)206-03-16  
**Санкт-Петербург** (812)309-46-40  
**Саранск** (8342)22-96-24  
**Саратов** (845)249-38-78  
**Севастополь** (8692)22-31-93  
**Симферополь** (3652)67-13-56  
**Смоленск** (4812)29-41-54  
**Сочи** (862)225-72-31  
**Ставрополь** (8652)20-65-13  
**Сургут** (3462)77-98-35

**Сыктывкар** (8212)25-95-17  
**Тамбов** (4752)50-40-97  
**Тверь** (4822)63-31-35  
**Тольятти** (8482)63-91-07  
**Томск** (3822)98-41-53  
**Тула** (4872)33-79-87  
**Тюмень** (3452)66-21-18  
**Улан-Удэ** (3012)59-97-51  
**Ульяновск** (8422)24-23-59  
**Уфа** (347)229-48-12  
**Хабаровск** (4212)92-98-04  
**Чебоксары** (8352)28-53-07  
**Челябинск** (351)202-03-61  
**Череповец** (8202)49-02-64  
**Чита** (3022)38-34-83  
**Якутск** (4112)23-90-97  
**Ярославль** (4852)69-52-93

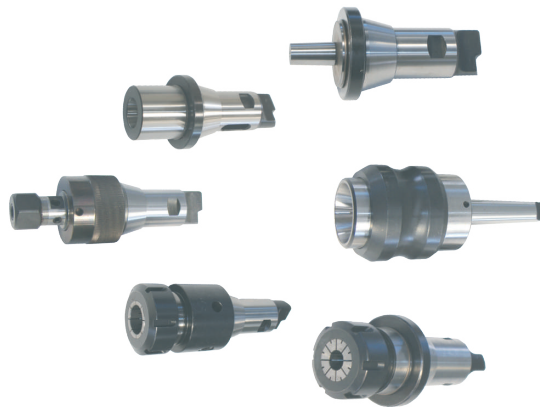
**Россия** +7(495)268-04-70

**Казахстан** +7(7172)727-132

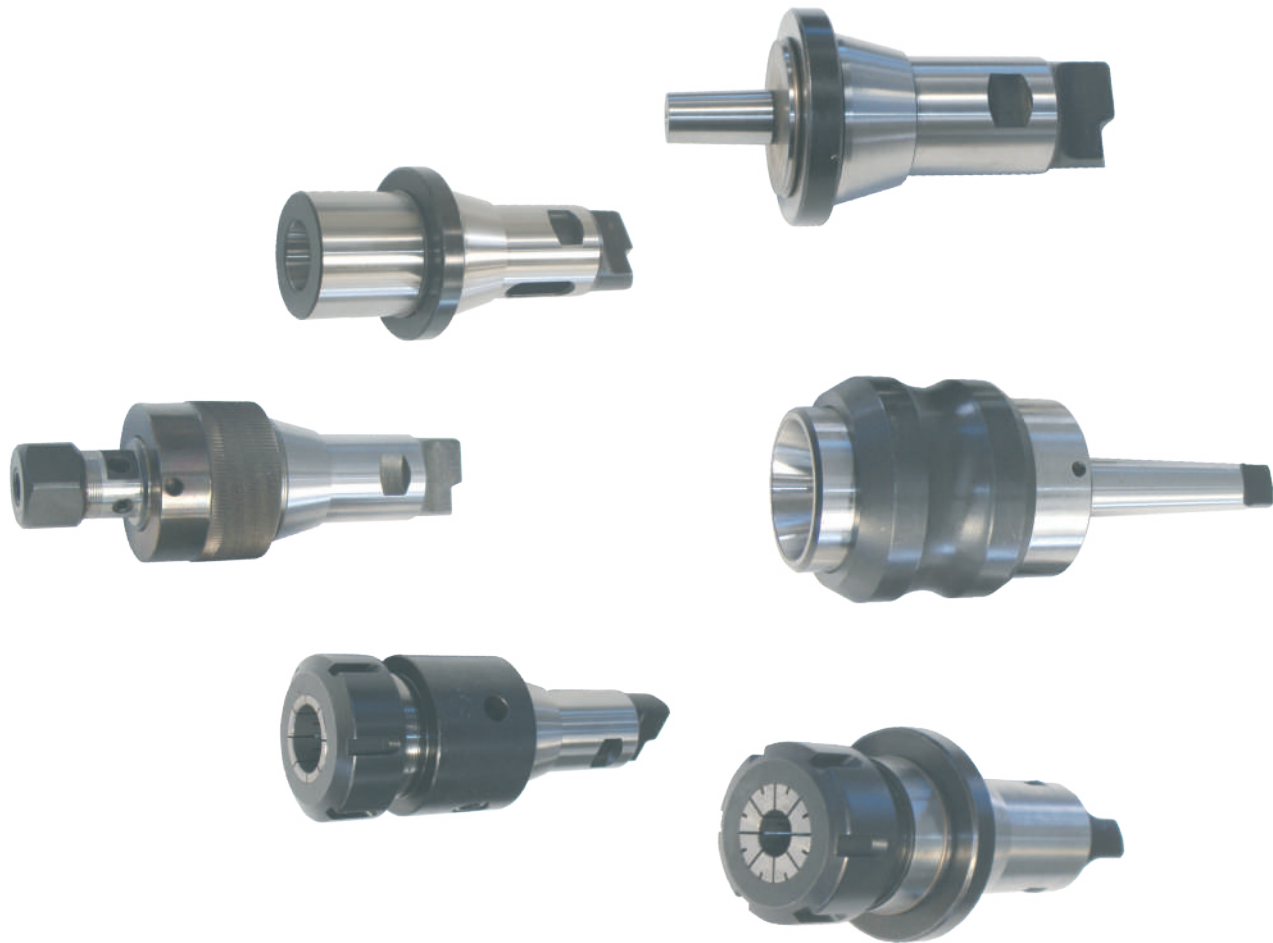
**Киргизия** +996(312)96-26-47

[ocm@nt-rt.ru](mailto:ocm@nt-rt.ru) || [www.omca.nt-rt.ru](http://www.omca.nt-rt.ru)

## ТЕХНИЧЕСКИЕ ХАРАКТЕРИСТИКИ НА ОПЦИИ ДЛЯ СТАНКОВ ФРЕЗЫ М, В16



## QUICK CHANGE CHUCKS WITH TAPER COUPLING QUICK CHANGE CHUCKS WITH TAPER SHANK



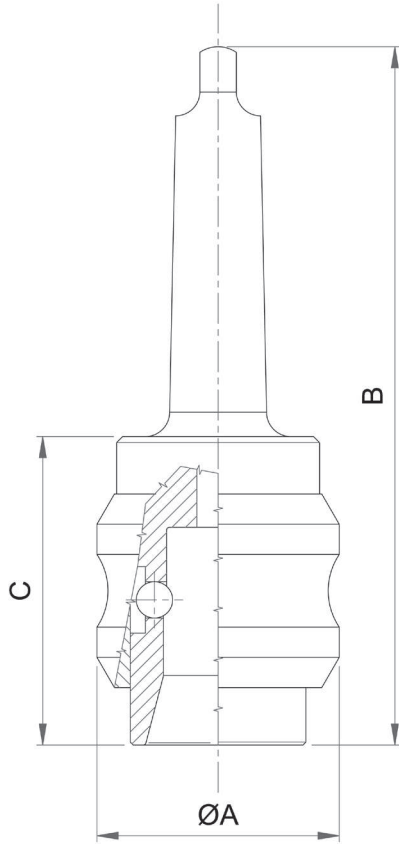
Entirely built in hardened and ground NiCr steel. The bush is guided on the spindle by a cylindrical part and a truncated conical part. A special device with balls on inclined planes generates a continuous traction force, and consequently the bush remains perfectly rigid and centred, any radial and axial play being eliminated. The axially sliding sleeve does not work by its own weight and therefore the spindle maintains its characteristics even when it works horizontally. The truncated cone-shaped hole in the mandrel facilitates the introduction of the bushings. The spindles **MR3-MR4-MR5**, despite having the Morse conical connection 3 - 4 - 5 respectively, they all have the same head and therefore all use the same bushings. It is therefore possible to use the same series of sockets on drills with different conical attachments. Upon request, all chucks can be supplied with an ISA-44 connection. The bushings are made of hardened and ground NiCr steel. The ring is free to rotate on the compass. The truncated cone shape allows introduction with the spindle in motion. The bushings allow the assembly of conical points, cylindrical points and taps, always obtaining the same length.

Entirely made in NiCr Steel tempered and ground. The bush is guided on the spindle by a cylindrical component and a frustum conical component. A special device with balls on tilted surfaces creates a continuous tractive force, and consequently the bush stays perfectly stiff and true, since every end float eliminated. The sliding sleeve in axial direction does not work for its own weight and therefore the spindle keeps its characteristics, even when it works on horizontal position. The hole of the spindle, being frustum conical, makes the introduction of the bushes easy. The spindles **MR3-MR4- MR5** even though they have Morse taper connections 3 - 4 - 5, have all the same head and therefore all of them use the same bushes. Hence it is possible to use the same set of bushes on drillers with different conical connections. Upon request all spindles can be equipped with ISA-44 connection. The bushes are made of NiCr Steel tempered and ground. The frustum of cone shape allows the introduction on the spindle even when it works. The ring nut is free to rotate. The bushes they allow the assembly of taps, conical and cylindrical drills an obtaining the same length.



# QUICK CHANGE CHUCKS

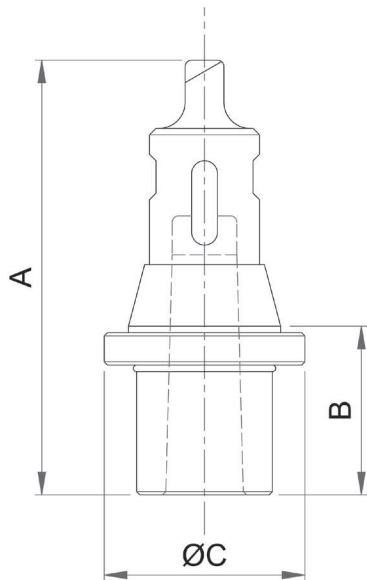
## QUICK CHANGE CHUCKS



Articolo - Order number		166/3	166/4	166/5
Modello - Type		MR3	MR4	MR5
Cono Morse - Morse Taper		3	4	5
Massima foratura - Max drilling	mm	31,5	50	50
Peso - Weight	Kg	2,3	2,7	3,6
A	mm	80	80	80
B	mm	206	231	257
C	mm	100	100	100

## BUSHES WITH INTERNAL MORSE TAPER

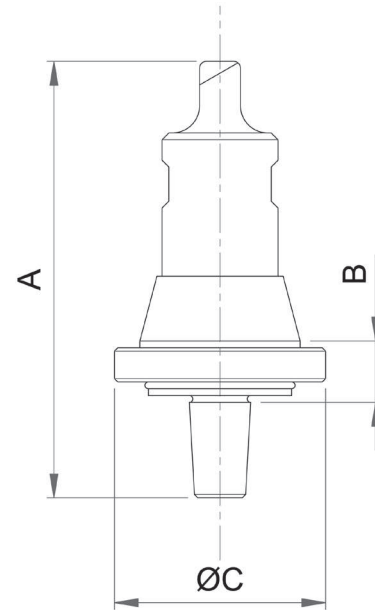
### DRILL WITH INTERNAL MORSE TAPER



Articolo - Order number		173	172	171	170
Modello - Type		M1	M2	M3	M4
Cono Morse - Morse Taper		1	2	3	4
Peso - Weight	Kg	1	1	1	1
A	mm	113	124	136	148
B	mm	30,5	41,5	53,5	65,5
C	mm	63	63	63	63

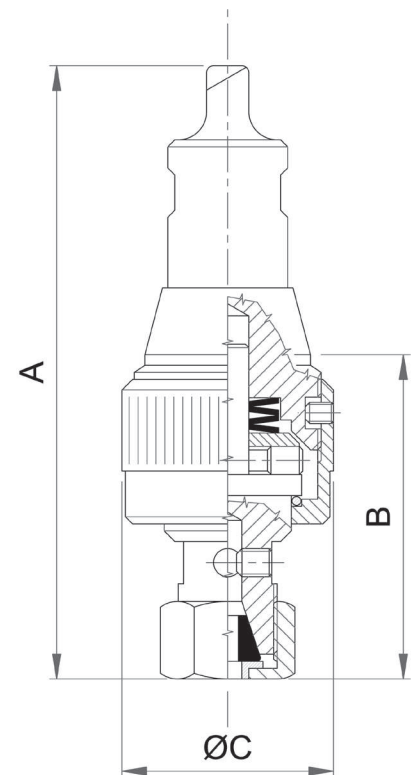


Articolo - Order number		295
Modello - Type		B16
Peso - Weight		Kg 1
A	mm	131
B	mm	20
C	mm	63



**TAPE BUSHES WITH ADJUSTABLE FRICTION  
TAP-COLLET WITH ADJUSTABLE FRICTION CLUTCH**

Articolo - Order number		272/2	272/3	272/4
Per Maschi - For Taps	mm	M2+M6	M6+M10	M12+M18
Peso - Weight	Kg	1,6	1,6	1,6
A	mm	170	170	174
B	mm	87	87	91
C	mm	60	60	70



Made entirely of casehardened and tempered NiCr steel, they are equipped with a snap clutch completely mounted on balls which achieves extreme sensitivity of regulation.

Completely made in NiCr cemented and hardened steel, they are equipped with an adjustable release clutch which, entirely assembled on balls, realizes a perfect adjustment sensitivity.

По вопросам продаж и поддержки обращайтесь:

**Алматы** (7273)495-231  
**Ангарск** (3955)60-70-56  
**Архангельск** (8182)63-90-72  
**Астрахань** (8512)99-46-04  
**Барнаул** (3852)73-04-60  
**Белгород** (4722)40-23-64  
**Благовещенск** (4162)22-76-07  
**Брянск** (4832)59-03-52  
**Владивосток** (423)249-28-31  
**Владикавказ** (8672)28-90-48  
**Владимир** (4922)49-43-18  
**Волгоград** (844)278-03-48  
**Вологда** (8172)26-41-59  
**Воронеж** (473)204-51-73  
**Екатеринбург** (343)384-55-89  
**Иваново** (4932)77-34-06  
**Ижевск** (3412)26-03-58  
**Иркутск** (395)279-98-46  
**Казань** (843)206-01-48

**Калининград** (4012)72-03-81  
**Калуга** (4842)92-23-67  
**Кемерово** (3842)65-04-62  
**Киров** (8332)68-02-04  
**Коломна** (4966)23-41-49  
**Кострома** (4942)77-07-48  
**Краснодар** (861)203-40-90  
**Красноярск** (391)204-63-61  
**Курган** (3522)50-90-47  
**Курск** (4712)77-13-04  
**Липецк** (4742)52-20-81  
**Магнитогорск** (3519)55-03-13  
**Москва** (495)268-04-70  
**Мурманск** (8152)59-64-93  
**Набережные Челны** (8552)20-53-41  
**Нижний Новгород** (831)429-08-12  
**Новокузнецк** (3843)20-46-81  
**Новосибирск** (383)227-86-73  
**Ноябрьск**(3496)41-32-12

**Омск** (3812)21-46-40  
**Орел** (4862)44-53-42  
**Оренбург** (3532)37-68-04  
**Пенза** (8412)22-31-16  
**Пермь** (342)205-81-47  
**Петрозаводск** (8142)55-98-37  
**Псков** (8112)59-10-37  
**Ростов-на-Дону** (863)308-18-15  
**Рязань** (4912)46-61-64  
**Самара** (846)206-03-16  
**Санкт-Петербург** (812)309-46-40  
**Саранск** (8342)22-96-24  
**Саратов** (845)249-38-78  
**Севастополь** (8692)22-31-93  
**Симферополь** (3652)67-13-56  
**Смоленск** (4812)29-41-54  
**Сочи** (862)225-72-31  
**Ставрополь** (8652)20-65-13  
**Сургут** (3462)77-98-35

**Сыктывкар** (8212)25-95-17  
**Тамбов** (4752)50-40-97  
**Тверь** (4822)63-31-35  
**Тольятти** (8482)63-91-07  
**Томск** (3822)98-41-53  
**Тула** (4872)33-79-87  
**Тюмень** (3452)66-21-18  
**Улан-Удэ** (3012)59-97-51  
**Ульяновск** (8422)24-23-59  
**Уфа** (347)229-48-12  
**Хабаровск** (4212)92-98-04  
**Чебоксары** (8352)28-53-07  
**Челябинск** (351)202-03-61  
**Череповец** (8202)49-02-64  
**Чита** (3022)38-34-83  
**Якутск** (4112)23-90-97  
**Ярославль** (4852)69-52-93

**Россия** +7(495)268-04-70

**Казахстан** +7(7172)727-132

**Киргизия** +996(312)96-26-47

**ocm@nt-rt.ru || www.omca.nt-rt.ru**